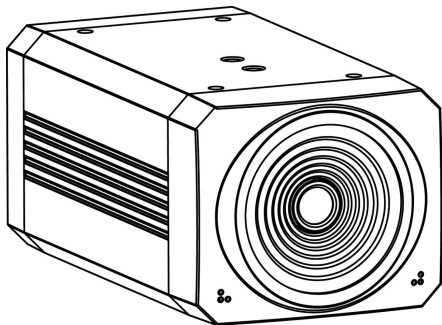


HD Box Camera



User Manual

English (V3.0)

Catalogue

| | | |
|---|---------------------------------------|----|
| 1 | Note | 1 |
| 2 | Supplied Accessories | 1 |
| 3 | About Product | 1 |
| | 3.1 Features | 1 |
| | 3.2 Product Specification | 2 |
| | 3.3 Interface and Button | 4 |
| | 3.4 Dimension | 4 |
| 4 | Menu Settings | 5 |
| | 4.1 MENU | 5 |
| | 4.2 EXPOSURE | 5 |
| | 4.3 COLOR | 5 |
| | 4.4 IMAGE | 6 |
| | 4.5 FOCUS | 6 |
| | 4.6 NOISE REDUCTION | 7 |
| | 4.7 SETTING | 7 |
| | 4.8 INFORMATION | 7 |
| | 4.9 RESTORE DEFAULT | 8 |
| 5 | Network Function | 8 |
| | 5.1 Operating Environment | 8 |
| | 5.2 Equipment Installation | 8 |
| | 5.3 Internet Connection | 8 |
| | 5.4 IP Camera controlled by LAN | 8 |
| | 5.5 Camera Controlled by WAN | 10 |
| | 5.6 IP Camera Parameter Setup | 11 |
| | 5.7 Download Upgrade Program | 16 |
| 6 | Product Installation | 17 |
| 7 | Image Tracking Configuration | 19 |
| | 7.1 Network Function | 19 |
| | 7.2 Configuration Process | 20 |
| | 7.3 Teacher Configuration | 21 |
| | 7.4 Student Configuration | 24 |

| | | |
|-----|---------------------------------------|----|
| 7.5 | Director Configuration | 27 |
| 7.6 | FAQ | 29 |
| 8 | Maintenance and Troubleshooting | 29 |

1 Note

- **Electric Safety**

Installation and operation must accord with electric safety standard.

- **Use Caution to Transport**

Avoid stress, vibration or soakage in transport, storage and installation.

- **Polarity of Power Supply**

The power supply of this product is +12V, the max electrical current is 2A. Polarity of the power supply plug drawing shows as below.



- **Installation Precautions**

Do not use in corrosive liquid, gas or solid environment to avoid any cover (plastic material) damage. Make sure there is no obstacle within rotation range.

Never power on before installation is completed.

- **Do not Dismantle the Camera**

We are not responsible for any unauthorized modification or dismantling.



Warning

Specific frequencies of electromagnetic field may affect the image of the camera!

2 Supplied Accessories

When you unpack, check that all the supplied accessories are included:

| Name | Quantity |
|---------------|----------|
| Camera | 1 |
| Power Adapter | 1 |
| User Manual | 1 |

3 About Product

3.1 Features

- **HD EPTZ**

Configure 4K Sensor and 4K lens to achieve high-definition electronic pan-tilt effect.

- **Intelligent Teaching Tracking**

Built-in leading image recognition and tracking algorithm, you can achieve smooth and natural tracking without any auxiliary positioning camera or tracking host.

It supports teacher tracking mode and student tracking mode.

- **AF Lens**

The 42° lens of the teacher camera supports auto focus, the horizontal angle of the student camera can reach 95°, the small lens, the big vision. At the same time, EPTZ is supported, and the brake is not moved, and it is enlarged and seen more clearly.

- **Low Light**

The application of 2D and 3D noise reduction algorithm greatly reduces the image noise. Even under the condition of ultra-low illumination, it still keeps the picture clean and clear, and the SNR of image is as high as 55dB.

- **Dual Interface Output**

It supports SDI interface, effective transmission distance up to 150 meters (1080P25). SDI and network can output at the same time.

- **PoC & PoE**

It supports PoC (Power over Cable) and PoE (Power over Ethernet) one-wire function, power, video, audio, control three-wire in one.

- **Interleaving Mode**

It can realize a single camera single SDI interface to simultaneously output panoramic and close-up signals.

3.2 Product Specification

| | |
|---------------------|---|
| Name | HD Box Camera |
| Camera | |
| Sensor | 1/2.8", CMOS, Effective Pixel: 8.46M |
| Scanning Mode | Progressive |
| Lens Mount | M12 |
| Lens 1 (teacher) | Focus: f=7.2mm, FOV: 42° |

| | |
|----------------------------|--|
| Lens 2 (student) | Focus: f=2.8mm, FOV: 95° |
| Auto Focus | Teacher Camera Support |
| Minimal Illumination | 0.5 Lux @ (F1.8, AGC ON) |
| Shutter | 1/30s ~ 1/10000s |
| White Balance | Auto, Indoor, Outdoor, One Push, Manual, VAR |
| Digital Noise Reduction | 2D & 3D Digital Noise Reduction |
| Backlight Compensation | Support |
| EPTZ | Support |
| Digital Zoom | 8x |
| PoE | Support |
| PoC | Support |
| Auto Tracking | Teacher/Student Mode |

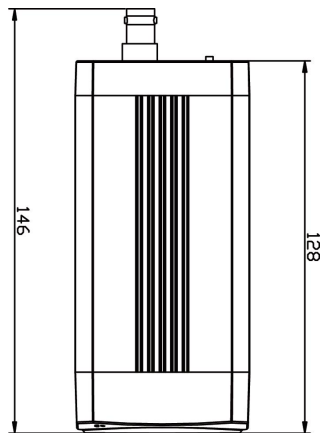
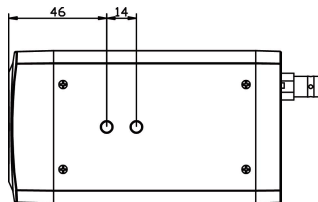
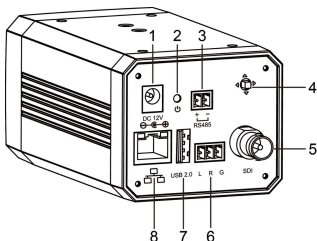
Network Features

| | |
|----------------------------|--|
| Encode Protocol | H.264/H.265/MJPEG |
| Video Stream | First/Second/Third/ Four Stream |
| First Stream Resolution | 1920x1080, 1280x720, 1024x576, 960x540, 640x480, 640x360, 352x288 |

| | |
|--------------------------|---|
| Second Stream Resolution | 3840x2160, 1920x1080, 1280x720, 1024x576, 720x576(50Hz), 720x480(Dial Priority), 720x408, 640x360, 480x272, 320x240, 320x180 |
| Third Stream Resolution | 1920x1080, 1280x720, 1024x576, 960x540, 720x576(50Hz), 720x480(Dial Priority), 720x408, 640x480, 640x360, 480x272, 320x240 |
| Four Stream Resolution | 1920x1080, 1280x720, 1024x576, 960x540, 720x576(50Hz), 720x480(Dial Priority), 720x408, 640x480, 640x360, 480x272, 320x240 |
| Video Bit Rate | 32Kbps ~ 16384Kbps |
| Bit Rate Control | Variable Rate, Fixed Rate |
| Frame Rate | 1fps ~ 25fps |
| Audio Compression | AAC/G711A |
| Audio Bit Rate | 96Kbps, 128Kbps |
| Protocols | TCP/IP, HTTP, RTSP, RTMP, ONVIF, DHCP etc. |

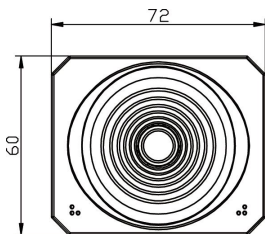
| Input/Output Interface | |
|------------------------|--|
| Network Interface | 1 x RJ45: 10M/100M Adaptive Ethernet Port, (Support POE) |
| SDI Interface | 1 x SDI: BNC type, 800mVp-p, 75Ω. Along to SMPTE 424M standard (Support POC) |
| Audio Interface | 1 x Line In: 3pin (Phoenix Interface) |
| USB Interface | 1 x USB 2.0: Type A, female |
| Control Interface | 1 x RS485: 2pin, Max Distance: 1200m, Protocol: VISCA / Pelco-D / Pelco-P |
| Power Interface | DC 12V |
| Physical Parameter | |
| Input Voltage | DC 12V / PoE (IEEE 802.3af) / PoC |
| Current Consumption | 1A (max.) |
| Operating Temperature | -10°C ~ 40°C |
| Storage Temperature | -40°C ~ 60°C |
| Power Consumption | 12W (max.) |
| Size | 72 x 60 x 128mm (without bracket) |
| Net Weight | 0.37Kg |

3.3 Interface and Button



| Item | Name |
|------|-------------------|
| 1 | DC 12V Interface |
| 2 | Power Indicator |
| 3 | RS485 Interface |
| 4 | Menu Button |
| 5 | SDI Interface |
| 6 | LINE IN Interface |
| 7 | USB 2.0 Interface |
| 8 | Network Interface |

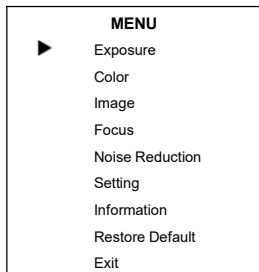
3.4 Dimension



4 Menu Settings

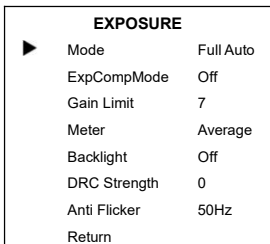
4.1 MENU

Press [MENU] button to display the main menu on the normal screen, using arrow button to move the cursor to the item to be set. Press the [HOME] button to enter the corresponding sub-menu.



4.2 EXPOSURE

Move the main menu cursor to [EXPOSURE], and press [HOME] key enter the exposure page, as shown in the following figure.



Mode: Exposure mode, optional items:

Full Auto, Manual, Shutter Priority, Bright, Smart.

ExpCompMode: Exposure compensation mode, optional items: On, Off (Effective only in Full Auto mode).

ExpComp: Exposure compensation value, optional items: -7 ~ 7 (Effective only in ExpCompMode item to On).

Gain Limit: Maximum gain limit, optional items: 0 ~ 15 (Effective only in Full Auto, Bright mode).

Meter: Optional items: Top, Average, Center, Bottom.

Backlight: Set the backlight compensation, optional items: On, Off (Effective only in Full Auto mode).

DRC Strength: Optional items: 0 ~ 8.

Anti-Flicker: Anti-flicker, optional items: Off, 50Hz, 60Hz (Effective only in Full Auto, Bright mode).

Bright: Intensity control, optional items: 0 ~ 17 (Effective only in Bright mode).

Shutter: Shutter value, optional items: 1/30s, 1/60s, 1/90s, 1/100s, 1/125s, 1/200s, 1/250s, 1/350s, 1/500s, 1/725s, 1/1000s, 1/1500s, 1/2000s, 1/3000s, 1/4000s, 1/6000s, 1/10000s (Effective only in Manual, SAE mode).

4.3 COLOR

Move the main menu cursor to [COLOR], and press [HOME] key enter the color page, as shown in the following figure.

| COLOR | | |
|-------|------------|------|
| ▶ | WB Mode | Auto |
| | AWB Sens | High |
| | RG Tuning | 0 |
| | BG Tuning | 0 |
| | Saturation | 100% |
| | Hue | 7 |
| | Return | |

WB-Mode: White balance mode, optional items: Auto, Indoor, Outdoor, One Push, Manual, VAR.

AWB Sens: The white balance sensitivity, optional items: Low, Middle, High.

R Gain: Red gain, optional items: 0~255 (Effective only in Manual mode).

B Gain: Blue gain, optional items: 0~255 (Effective only in Manual mode).

Color Temp: Optional items: 2500K ~ 8000K (Effective only in VAR mode).

RG Tuning: Red gain fine-tuning, optional items: -10 ~ +10 (Effective only in Auto, One Push, VAR mode).

BG Tuning: Blue gain fine-tuning, optional items: -10 ~ +10 (Effective only in Auto, One Push, VAR mode).

Saturation: Optional items: 60% ~ 200%.

Hue: Optional items: 0 ~ 14.

4.4 IMAGE

Move the main menu cursor to [IMAGE], and press [HOME] key enter the image page, as shown in the following figure.

| IMAGE | | |
|-------|-----------|---------|
| ▶ | Luminance | 7 |
| | Contrast | 7 |
| | Sharpness | 4 |
| | Flip-H | Off |
| | Flip-V | Off |
| | Gamma | EXT |
| | Style | Default |
| | LDC | Off |
| | Return | |

Luminance: Brightness adjustment, optional items: 0 ~ 14.

Contrast: Contrast adjustment, optional items: 0 ~ 14.

Sharpness: Sharpness adjustment, optional items: 0 ~ 14.

Flip-H: Image flipped horizontally, optional items: On, Off.

Flip-V: Image Flip Vertical, optional items: On, Off.

Gamma: Optional items: Default, 0.45, 0.5, 0.56, 0.63.

Style: Optional items: Default, Norm, Clarity, Bright, PC, Clarity (LED).

LDC: Optional items: -10 ~ 10, Off.

4.5 FOCUS

Move the main menu cursor to [FOCUS], and press [HOME] key enter the noise reduction page, as shown in the following figure.

| FOCUS | | |
|-------|------------|-------------|
| ▶ | AF Sense | Low |
| | Focus Mode | One-Shot |
| | Focus Area | Middle Area |
| | Return | |

AF Sense: Optional items: Low, Medium, High.

Focus Mode: Optional items: Auto, Manual, One-Shot.

Focus Area: Optional items: Middle Area, Bottom Half, All, Upper Half.

4.6 NOISE REDUCTION

Move the main menu cursor to [NOISE REDUCTION], and press [HOME] key enter the noise reduction page, as shown in the following figure.

| NOISE REDUCTION | | |
|-----------------|--------|------|
| ▶ | 2D NR | Auto |
| | 3D NR | 2 |
| | Return | |

2D NR: 2D noise reduction, optional items: Close, Auto, 1 ~ 5.

3D NR: 3D noise reduction, optional items: Close, 1 ~ 8.

4.7 SETTING

Move the main menu cursor to [SETTING], and press [HOME] key enter the setting page, as shown in the following figure.

| SETTING | | |
|---------|--------------|----------|
| ▶ | Language | English |
| | Protocol | VISCA |
| | Visca Addr | 1 |
| | EPTZ | On |
| | Zoom Limit | 1x ~ 8x |
| | HD-VLC | Off |
| | SDI View | Close-Up |
| | Video Format | 1080P25 |
| | Return | |

Language: Optional items: English, Chinese.

Protocol: Optional items: VISCA, PELCO-D, PELCO-P.

Visca Addr: Optional items: 1 ~ 7 (Effective only in VISCA Protocol).

P-D Addr: Optional items: 0 ~ 254 (Effective only in PELCO-D Protocol).

P-P Addr: Optional items: 0 ~ 31 (Effective only in PELCO-P Protocol).

EPTZ: Optional items: On, Off.

Zoom Limit: Optional items: 1x ~ 8x, 2x ~ 4x, 2x ~ 8x, 3x ~ 8x, 1x ~ 3x, 1x ~ 4x.

HD-VLC: Optional items: On, Off.

SDI View: Optional items: Close-Up, MixedP60, MixedP50, Auto, Panoramic.

Video Format: Optional items: 1080P30, 1080P25.

4.8 INFORMATION

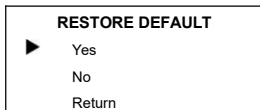
Move the main menu cursor to [INFORMATION], and press [HOME] key enter the information page, as shown in the following figure.

INFORMATION

| | |
|----------|----------------|
| Version | 8.2.60 |
| Model | O44.THW |
| Date | 2021-05-24 |
| IP | 192.168.100.82 |
| Gateway | 192.168.100.1 |
| Netmask | 255.255.255.0 |
| ▶ Return | |

4.9 RESTORE DEFAULT

Move the main menu cursor to [RESTORE DEFAULT], and press [HOME] key enter the restore default page, as shown in the following figure.



Yes: Confirm restore factory settings.

No: Cancel restore factory settings.

5 Network Function**5.1 Operating Environment**

Operating System: Windows 2000/2003/XP/vista/7/8/10

Network Protocol: TCP/IP

Client PC: P4/128M RAM/40GHD/support scaled graphics card, support DirectX 8.0 or more advanced version.

5.2 Equipment Installation

1) Connect internet camera to your internet or to your PC directly via internet cable.

- 2) Turn on DC 12V power.
- 3) If the network connection is normal, the connection light (green) at the network interface will light up within 5 seconds, and the data indicator (orange) will flash, indicating that the physical connection of the camera has been completed.

5.3 Internet Connection

There are two main ways to connect network camera.



Connect by Network Cable



Connect by Switch/Router

5.4 IP Camera controlled by LAN**5.4.1 Setup IP Address**

The teacher and student camera IP can be found on the label of the camera. If you don't know the camera IP, please view as below:

Method 1: Use the remote control to transfer out the OSD menu, and go to the information page to see the IP address.

Method 2: connect camera to PC with network cable, use "upgrade_En.exe" to search for IP address.



upgrade

Change IP address, two methods as below:

Method 1: Login the web page, select "Network > Lan Settings", change IP address, subnet mask and gateway. Click "Submit" and restart the camera.

Lan Settings

IP Configuration Type: Fixed IP Address

IP Address: 192.168.100.82

Subnet Mask: 255.255.255.0

Gateway: 192.168.100.1

DNS Address: 8.8.8.8

MAC Address: 04 ED 3E CD 82 6E

Submit Cancel

Port Settings

HTTP Port: 80

RTSP Port: 554

TCP Port: 8000

UDP Port: 1235

RTP(S) Settings

First Stream: On Off Video Audio

MRL: rtsp://192.168.100.130:130/live1stream2

Second Stream: On Off Video Audio

MRL: rtsp://192.168.100.130:130/live1stream1

Third stream: On Off Video Audio

MRL: rtsp://192.168.100.150:150/live2stream2

Fourth stream: On Off Video Audio

MRL: rtsp://192.100.100.130:130/live1stream3

RTP Settings

RTSP Auth: On Off

ONVIF Settings

ONVIF: On Off

ONVIF Auth: On Off

Multicast Settings

Multicast: On Off

Address: 224.1.2.3

Port: 6558

SDM Settings

Active Connection: On Off

Address: 192.168.100.130

Port: 1234

STP Settings

NTP time sync: On Off

Time Zone: (GMT+08:00) Beijing, Chi. ▼

Server address: cn.fdp.org.cn

Time interval(mn): 1440

Main time show: On Off

Position: X 0 Y 0

Sub time show: On Off

Position: X 0 Y 0

Method 2: Open "upgrade_En.exe", change IP and click "Set". After modified, IP Camera will be restart.

UPGRADE v1.9

Search Upgrade Config Backup

Mode: Manual

IP Address: 192.168.100.82

Mask: 255.255.255.0

Gateway: 192.168.100.1

First DNS: 192.168.100.1

MAC Address: 04 : ED : 3E : CD : 82 : 6E

Set Reset

Language: English

Change IP Address:

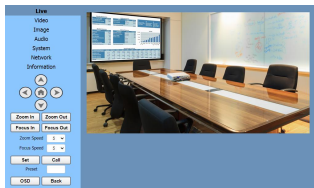
- Step 1** Search the IP address of camera.
- Step 2** Select the camera IP of you want to change.
- Step 3** Select config dialog of upgrade applets.
- Step 4** Change the IP address, netmask and gateway, then click "Set".
- Step 5** Finish.

5.4.2 Visit/Access IP Camera

Access the camera IP address, then enter username and password in the browser to login WEB interface (Default IP, username and password can be found on the label of the camera).



After login, shown as below:



Tips

IE browser does not support H5, you need to use VLC plug-in to view videos. Please visit VLC website (<http://www.videolan.org/vlc>) download and install the 32-bit VLC media player, after it installed, visit video conference camera will have normal image display. Other mainstream browsers already support H5 and do not need to install the VLC plug-in.

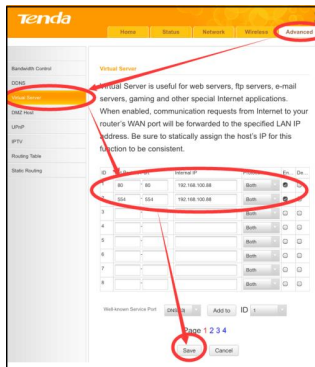
5.5 Camera Controlled by WAN

5.5.1 Setup IPC Controlled by Dynamic DNS

Two dynamic DNS available: Dyndns.org, 3322.org

Router Port Mapping:

Take Tenda router for example, enter Router Home Page (interface page), select "Advanced" - "Virtual Server", add a new port number in "Ext Port", add a new port number in "Int port", put camera IP address to "Internal IP", then select "Save", shown as below:



5.5.2 Dynamic DNS Visit Camera

Set domain name to camera, setup the parameter, then dynamic DNS can access camera. Access link: <http://hostname:port> number. For example, setup host computer name: youdomain.f3322.org, camera port number: 89. Access link should be: <http://youdomain.3322.org:89>.



Tips

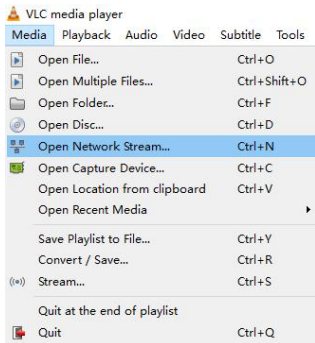
If camera port default as 80,
then unnecessary to input port number,
use host name can access camera directly.

5.5.3 VLC Stream Media Player

Visit VLC Media Server Procedure

Step 1 Open VLC media player.

Step 2 Click "Media > Open Network Stream", or click "Ctrl + N":



Step 3 Input URL address:

First Stream:

rtsp://ip: port number/1

Second Stream:

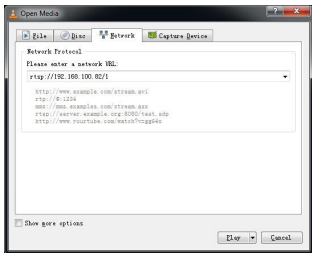
rtsp://ip: port number/2

Step 4 Finish.



Tips

RTSP port number default 554. If the camera port default is 80, then unnecessary to input port number of URL address.



5.6 IP Camera Parameter Setup

5.6.1 Homepage Introduction

A. Video Viewing Window

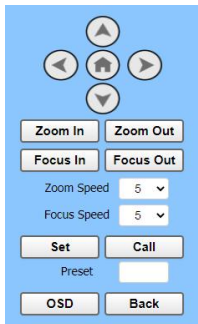
Video viewing window must be same as video resolution, the bigger the resolution is, the bigger the playing area is. Double click viewing window, will show full-screen, double click again, will return to initialized size.

Status bar in viewing window shown as below:



- 1) Video playback pause button: control real-time video pause, stop the last picture, click recoverable video again.
- 2) Audio control buttons: can adjust the volume or set silent mode.
- 3) Full screen switch button.

B. Lens Control Settings



1) Lens Control

Up, Down, Left and Right arrows and the home button allow you to manually drive the camera to the desired position.

2) Zoom

Zoom In and Zoom Out buttons allow for wide or narrow view of the space.

3) Focus

Focus In and Focus Out buttons allow for fine manual focus adjustment if the camera has any problems auto focusing on the difficult object.

4) Zoom & Focus Speed

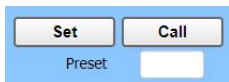
Zoom and Focus speeds can be set at any rate between 0 ~ 7.

5) Set Up Preset

After manually setting up a shot that you would like to return to later, you can save presets for quick recall of these positions. Type a number between 0 and 254 into the Preset box. Click the "Set" button to save the current location with that preset number. Click the "Call" button to cause the camera to return to that position. This enables smooth, quick and convenient control without the need to manually drive the camera.

You can set up preset that user want as below.

Method: Type a number into the Preset box.

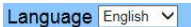


Preset: Optional items: 0 ~ 254.

6) Menu

Click the "Menu", OSD option will open the on-screen display menu of the camera giving you control from within the IP interface.

C. Language Selection



Chinese/English/Russian

5.6.2 Video Settings

Video Settings

hdvlc: Off (only mixed format)

Video Format: Dial Priority

Encode Level: mainprofile

First stream

Encode Protocol: H264

Resolution: 1920x1080

Bit Rate: 4096

Frame Rate: 25 fps

I Key Frame Interval: 25

Bit Rate Control: CBR

Second stream

Encode Protocol: H264

Resolution: 1920x1080

Bit Rate: 3000

Frame Rate: 25 fps

I Key Frame Interval: 25

Bit Rate Control: CBR

third stream

Encode Protocol: H264

Resolution: 640x360

Bit Rate: 1024

Frame Rate: 25 fps

I Key Frame Interval: 25

Bit Rate Control: CBR

fourth stream

Encode Protocol: H264

Resolution: 1920x1080

Bit Rate: 3000

Frame Rate: 25 fps

I Key Frame Interval: 25

Bit Rate Control: CBR

1) hdvlc

Turn On/Off hdvlc.

2) Video Format

Support 50Hz and Dial Priority two formats.

3) Encode Level

Support baseline, mainprofile, highprofile and svc-t four levels.

4) Encode Protocol

Support H.264/H.265/MJPEG protocol.

5) Resolution

First stream support 1920x1080, 1280x720, 1024x576, 960x540, 640x480, 640x360, 352x288; Second stream support 3840x2160, 1920x1080, 1280x720, 1024x576, 720x576 (50Hz), 720x480 (Dial Priority), 720x408, 640x360, 480x272, 320x240, 320x180; Third stream and four stream supports 1920x1080, 1280x720, 1024x576, 960x540, 720x576 (50Hz), 720x480 (Dial Priority), 720x408, 640x480, 640x360, 480x272, 320x240; The bigger resolution is, the clearer the image will be, more network bandwidth will be taken.

6) Bit Rate

The user can specify the bit rate. Generally speaking, the larger of the bit rate, the clearer of the image. However, the configuration of the bit rate needs to be combined with the network bandwidth. When the network bandwidth is narrow and the bit rate is configured larger, the video stream cannot be transmitted normally, and the visual effect is worse.

7) Frame Rate

User can specify the size of the frame rate, generally, the frame rate greater, the image will more smooth; Frame rate is smaller, the more sense of beating.

8) I Key Frame Interval

Set interval between three I frame, the bigger interval is the response will be lower from viewing window.

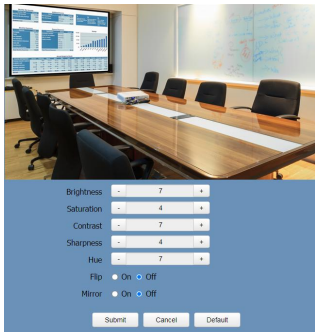
9) Bit Rate Control

Code stream control way:

Constant bit rate: video coder will be coding according to preset speed.

Variable bit rate: video coder will adjust the speed based on preset speed to gain the best image quality.

5.6.3 Image Settings



1) Brightness

Image bright 0~14, slider control, on the right shows the corresponding numerical.

Default value is 7.

2) Saturation

Saturation 0~14, slider control, on the right shows the corresponding numerical.

Default value is 4.

3) Contrast

Contrast 0~14, slider control, on the right shows the corresponding numerical.

Default value is 7.

4) Sharpness

Sharpness 0~14, slider control, on the right shows the corresponding numerical.

Default value is 4.

5) Hue

Hue 0~14, slider control, on the right shows the corresponding numerical.

Default value is 7.

6) Flip & Mirror

Tick Flip to realize image upside down, tick mirror to realize image around the mirror.

Default value is not tick.

5.6.4 Audio Settings



1) Audio Switch

Turn On/Off audio switch.

2) Audio Type

Audio type AAC.

3) Sample Rate

Optional items: 44.1K, 48K.

4) Bit Rate

Optional items: 96K, 128K, 256K.

5) Input Type

Input type LINE IN.

6) Input Vol L

The volume of the left channel.

7) Input Vol R

The volume of the right channel.

8) ADTS Options

Optional items: On, Off.

5.6.5 System Settings

Initialize

Reboot

Factory Default

Log Download

User

UserName

Passwd

Guest

Passwd

1) Reboot

Click the "Reboot" button, system restart.

2) Factory Default

Click the "Factory Default" button, system can be restore factory default.

3) Log Download

Access Log and Upgrade Log.

4) Username and Password

The user can modify the password (letters and numbers only).

5.6.6 Network Settings

Lan Settings

IP Configuration Type

IP Address

Subnet Mask

Gateway

DNS Address

MAC Address

Port Settings

HTTP Port

RTSP Port

TCP Port

UDP Port

RTMP(S) Settings

First Stream On Off Video Audio

MRL

Second Stream On Off Video Audio

MRL

Third stream On Off Video Audio

MRL

Fourth stream On Off Video Audio

MRL

RTSP Settings

RTSP Auth On Off

ONVIF Settings

ONVIF On Off

ONVIF Auth On Off

Multicast Settings

Multicast On Off

Address

Port

SDK Settings

Active Connection On Off

Address

Port

NTP Settings

NTP time sync On Off

Time Zone

Server address

Time interval(min)

Main time show On Off

Position

Sub time show On Off

Position

1) Lan Settings

The teacher and student camera IP can be found on the label of the camera.

The MAC address can not be modified.

2) Port Settings**A. HTTP Port**

IP address identifies the network device, the device can run multiple web applications, each network program using network port to transmit data, so data transmission to be carried out between the port and port. Port setting is to set up WEB SERVER program using which port to transmit.

When port mapping, need to be consistent with the port number (default port: 80).

B. RTSP Port

Network camera support RTSP protocol, use the VLC tools broadcast, default port: 554.

C. TCP Port

Support TCP protocol, default port: 6000.

D. UDP Port

Support UDP protocol, default port: 1259.

3) RTMP(S) Settings

Setting the MRL of RTMP, select enable or disable video and audio. You can select control code stream of "On", "Off", "Video", "Audio" between in the four streams.

4) RTSP Settings

Turn On/Off RTSP auth.

5) ONVIF Settings

Turn On/Off ONVIF and ONVIF auth.

6) Multicast Settings

Turn On/Off multicast. Setting multicast address (default value is 224.1.2.3) and port (default value is 6688, then 6688 is the multicast port of the first stream; 6690 is the multicast port of the second stream).

7) SDK Settings

Turn On/Off active connection. Setting SDK address (default value is 192.168.100.138) and port (default value is 1234).

8) NTP Settings

Turn On/Off NTP time sync, main time show and sub time show. Setting NTP server address, time interval, main stream position and sub stream position.

5.6.7 Device Information

Show the current device information, as shown below.

The screenshot shows a blue-themed 'Information' window with the following details:

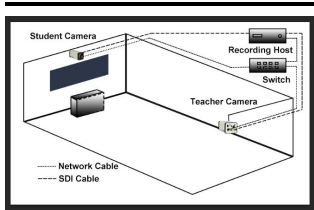
| Field | Value |
|------------------|------------|
| Device ID | HD Camera |
| Device Type | O44.T1 |
| Software Version | SOC 8.2.41 |
| Webware Version | v1.5.5 |

At the bottom of the window are two buttons: 'Submit' and 'Cancel'.

5.7 Download Upgrade Program

If you need the camera upgrade program, please contact the manufacturer.

6 Product Installation



Installation Diagram

Teacher HD Box Camera

(Focus: $f=7.2\text{mm}$, FOV: 42°)

Installation height: 2.2M~2.4M

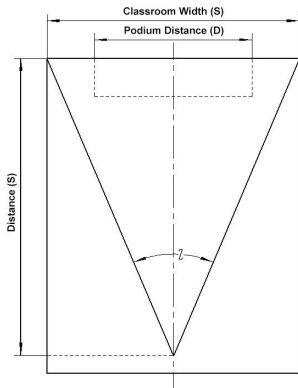
Installation position: horizontally centered installation. The position longitudinally away from the blackboard wall is calculated with the following formula:

The distance between the teacher machine and the blackboard wall $S=(W/2)/\tan(Z/2)$, where W is the width of the wall where the blackboard is located, and Z (42°) is the horizontal field of view of the teacher machine lens.

Take a standard 10 x 8 meter classroom as an example, if the width of the wall where the blackboard is located is 8 meters, then $L=10$ meters.

The smaller S is the closer the teacher's computer is to the blackboard, the better the effect of the teacher's close-up.

For a standard 10 x 8 meter classroom, S recommends 10 meters. For a standard 8 x 6 meter classroom, S recommends 8 meters.



Installation method: It is best to install with a boom to ensure the distance between the teacher's computer and the blackboard.

Taking a standard 10 x 8 meter classroom as an example, if it is installed on the back wall of the classroom ($S=10$ meters), the distance may be too large. The horizontal range of the image taken exceeds the width of the wall where the blackboard is located. The doors and windows on both side walls will be Intake. The sharpness will be insufficient when the teacher closes up the picture.

Wiring Reservation:

Scene 1 (when using a POE switch):

1. One SDI line is connected to the SDI 1 input port of the recording and broadcasting host, and the teacher's close-up video input.
2. A network cable (at least Category 5),

connected to a POE switch, providing power supply, control, and panoramic network video input for teachers.

Scene 2 (when using a non-POE switch):

1. One SDI cable is connected to the SDI 1 input port of the recording and broadcasting host.
2. One network cable (at least Category 5), connected to the switch, to provide control and panoramic network video input for teachers.
3. The AC 220V AC dual-hole socket interface is connected to the camera's standard power supply, and the standard power supply DC 12V power connector is connected to the camera, which is used for camera power supply.

Student HD Box Camera

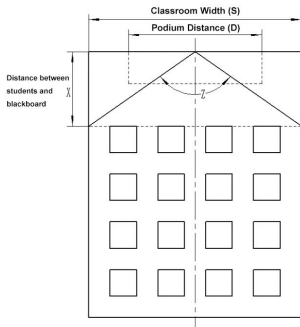
(Focus: $f=2.8\text{mm}$, FOV: 95°)

Installation height: 2.2M~2.4M

Installation method: wall-mounted

Installation Location

1. Front installation: The best installation position is the middle of the blackboard wall, and the student area is taken from the front.
2. Side installation: In order to solve the problem that the first row of students are too close to the podium and the shooting is not enough to cover the area of the first row of students in the formal installation, consider adjusting the camera installation position and install it on the side.



Calculate the closest distance X between the first row of students and the formal camera.

$$X^2 = (W / 2 * \tan(Z / 2))^2 - H^2$$

Where W is the width of the wall where the blackboard is located or the width of the first row of students' shots. Z (95°) is the horizontal field of view of the student camera lens, and H is the installation height of the camera.

Taking a standard 10 x 8 meter classroom as an example, the width of the wall where the blackboard is located is 8 meters, the installation height of the camera is 2.2 meters, and X is calculated to be 2.8 meters.

Wiring reservation:

Scene 1 (when using a POE switch):

1. One SDI line is connected to the SDI 1 input port of the recording and broadcasting host, and the teacher's close-up video input.

2. A network cable (at least Category 5), connected to a POE switch, providing power supply, control, and panoramic network video input for teachers.

Scene 2 (when using a non-POE switch):

1. One SDI line is connected to the SDI1 input port of the recording and broadcasting host.

2. One network cable (at least Category 5), connected to the switch, providing control and panoramic network video input for teachers.

3. The AC 220V AC dual-hole socket interface is connected to the camera's standard power supply, and the standard power supply DC 12V power connector is connected to the camera, which is used for camera power supply.

7 Image Tracking Configuration

7.1 Network Function

This description mainly introduces the close-up camera network, and the panoramic camera network description does not introduce it.

7.1.1 Enter the Web Interface

- View Camera IP

The network cable is connected to the computer, and the IP of the machine can be searched with our dedicated camera upgrade software. (If you need software, please contact the manufacturer to obtain)

Access the camera IP address, then enter username and password in the browser to login WEB interface.

- There are two ways to change camera IP:

Method 1: Click the webpage [Network Settings] with the mouse to enter the interface and make changes, click "Submit", and then restart the camera.

LAN Settings

IP Configuration Type: Fixed IP Address

IP Address: 192.168.100.82

Subnet Mask: 255.255.255.0

Gateway: 192.168.100.1

DNS Address: 8.8.8.8

MAC Address: D4 ED BE C0 82 BE

Submit Cancel

Port Settings

HTTP Port: 80

RTSP Port: 554

TCP Port: 8000

LEIP Port: 1259

RTP (S) Settings

First Stream: On Off Video Audio

MRL: rtp://192.168.100.138/live/streams0

Second Stream: On Off Video Audio

MRL: rtp://192.168.100.138/live/streams1

Third stream: On Off Video Audio

MRL: rtp://192.168.100.138/live/streams2

Fourth stream: On Off Video Audio

MRL: rtp://192.168.100.138/live/streams3

RTSP Settings

RTSP Auth: On Off

ONVIF Settings

ONVIF: On Off

ONVIF Auth: On Off

Multicast Settings

Multicast: On Off

Address: 224.1.2.3

Port: 8008

SDI Settings

Active Connection: On Off

Address: 192.168.100.138

Port: 1254

NTP Settings

NTP time sync: On Off

Time Zone: (GMT+08:00) Beijing, Chi... ▾

Server address: cn.mp.org.cn

Time interval(min): 1440

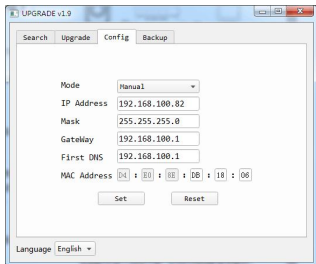
Main time show: On Off

Position: X 0 Y 0

Sub time show: On Off

Position: X 0 Y 0

Method 2: Modify the configuration items in the camera-specific upgrade software, and then click Settings.



- The camera needs to be restarted after changing the camera IP. The method is as follows:

Method 1: Manually power off and restart
 Method 2: Click Restart in the web page system configuration item (applicable to remote)

- View software version information

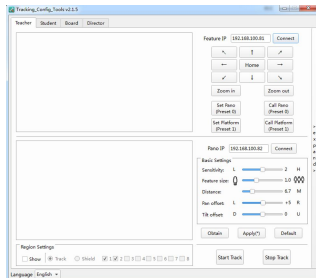


Tips

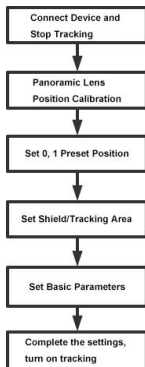
The teacher and student camera IP can be found on the label of the camera.

7.2 Configuration Process

Configure through the software "Tracking Config Tools" provided by our company. The config tool interface is as follows:



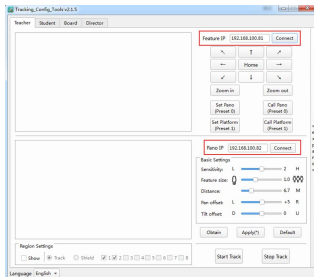
The setting process of teacher/student camera is as follows:



7.3 Teacher Configuration

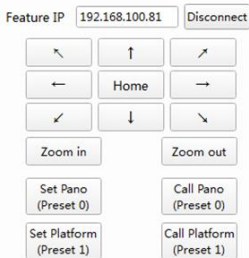
7.3.1 Connect the Device

Connect the IP of the feature camera and the IP of the pano camera on the teacher's camera, and click [Stop Track] to enter the debugging state, as shown below:



7.3.2 Set Preset Position

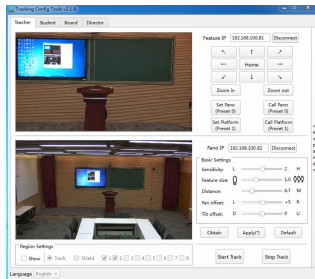
Set panoramic position, set podium position, available [↑] [↓] [←] [→] [Zoom in] [Zoom out] to adjust the position of the close-up lens; call the panoramic position, call the podium position, and verify whether the panoramic position and the podium position are valid, as shown below:

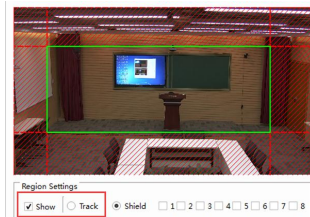


7.3.3 Set Shielding/Tracking Area

● Tracking Area Setting

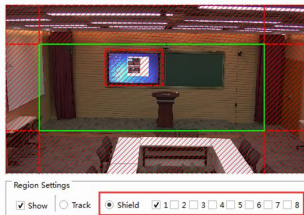
Check [Show], select the tracking area, click the starting point of the tracking area to be set with the left mouse button, hold down the left mouse button and drag to draw a rectangular tracking area.





● Block Area Settings

Shield the large screen and other interference sources in the tracking area, support 8 shielding areas; check [Show], select the shielding area, click the starting point of the shielding area to be set with the left mouse button, hold down the left mouse button and drag to draw a rectangular shielding area, part of the tracking area should be reserved under the shielding area, and shielding areas cannot be set on the left and right borders of the tracking area, as shown in the following figure:



7.3.4 Configure Basic Parameters

- Configure basic parameters and click [Apply] to take effect;
- Sensitivity: Set the range of action and tracking response speed that triggers teacher tracking, the optional range is 0~4, and the default value is 2.
- Feature size: Set the viewing angle range of the close-up camera's tracking screen, the setting range: 0.5~2.0, the default value is 1.0.
- Distance: the horizontal distance between the teacher's camera and the podium, the setting range: 3.0~20.0, the default value is 6 meters.
- Pan offset: optional range: -200~+200 (steps), 0.069°/step; negative numbers are calibrated to the left, positive numbers are calibrated to the right, default: +5;
- Tilt offset: Optional range: -200~+200 (steps), 0.069°/step; negative numbers are calibrated down, positive numbers are calibrated up, default: 0;

Pano IP

Basic Settings

Sensitivity: L H

Feature size:

Distance: M

Pan offset: L R

Tilt offset: D U

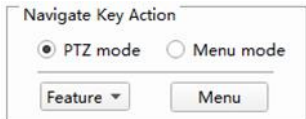
7.3.5 Advanced Parameter

Configuration

Set advanced parameters, click [click to expand] to set advanced parameters.

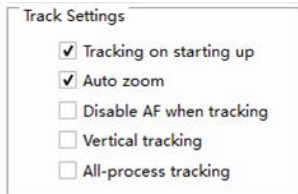
- Navigate Key Action

You can choose PTZ mode or menu mode. In the menu mode, select [Feature] or [Pano], and click the [Menu] button to set the camera's OSD menu. In PTZ mode, you can manually control the [Feature] PTZ.



- Track Settings

Set the working mode of the tracking camera, you can choose: Tracking on starting up, Auto zoom, Disable AF when tracking, Vertical tracking, All-process tracking five working modes; check "✓" to take effect.

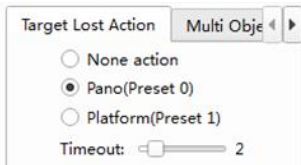


- Target Action

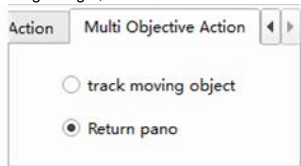
Target Lost Action: Set [Feature Camera] the action after losing the target, you can choose: None action, Pano (Preset 0),

Platform (Preset 1).

Timeout: Indicates that after the target is lost, the [Target Lost Action] will be executed after the timeout period has elapsed. Value range: 0-15s, default: 3s.

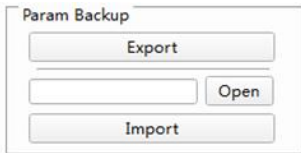


Multi Objective Action: Set the tracking status when the teacher is tracking multiple targets in the tracking area. You can choose: track moving targets and return to the panorama; when the number of teachers' targets changes from multiple targets to single targets, a 5s delay is required to track a single target, as shown below.



- Param Backup

Param Backup: Used to import and export the configuration parameters of the feature camera to simplify the configuration tasks of the same scene, as shown in the figure below.



Export: When you stop tracking, click [Export] to back up the tracking parameters, click [Open], and you can see the file path;
Import: When stopping tracking, click [Open] to select the tracking parameters to be imported, and click [Import] to wait for completion;

Version Info: display the version information of the feature camera and the pano camera.



7.3.6 Start Track

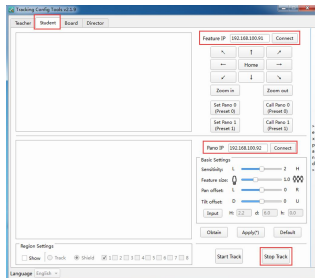
After completing the parameter configuration, click [Apply] to ensure that the configuration parameters take effect, and then click [Start Track] to enter the automatic tracking mode.



7.4 Student Configuration

7.4.1 Connect the Device

Connect the IP of the feature camera and the IP of the pano camera on the student's camera, and click [Stop Track] to enter the debugging state, as shown below:

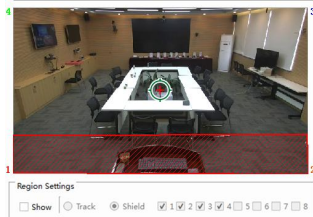


7.4.2 Set PTZ Mode

There are two modes of pan/tilt: [electronic pan/tilt] and [cutout]. When you select [Electronic PTZ], the close-up picture will be given in the form of analog PTZ, and when you select [Mutout], it will be given the close-up picture in the form of straight cut.

7.4.3 Set Shielding Area

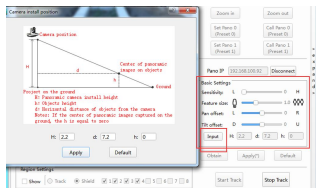
Shielding area setting: check [Show], check the "√" to set the number of the shielding area, such as shielding area 1, use the mouse to click the left edge of the shielding area 1, and drag the mouse to the neighboring or separating border in a counterclockwise direction. as shown in the figure below.



7.4.4 Configure Basic Parameters

- Configure basic parameters and click [Apply] to take effect;
- Sensitivity: To match different tracking targets, use 3 or 4 for elementary and middle school students, use 2 for high school students, and use 0 or 1 for college students. The default value is 2;
- Feature size: Set the viewing angle range of the close-up camera tracking picture, the setting range: 0.5~2.0, the default value is 1.0;
- Pan offset: Optional range: -200~+200 (steps), 0.069°/step; negative numbers are calibrated to the left, positive numbers are calibrated to the right, default: 0;
- Tilt offset: Optional range: -200~+200 (steps), 0.069°/step; negative numbers are calibrated down, positive numbers are calibrated up, default: 0;
- Input height and length: the installation height of the student computer and the horizontal distance between the projection point of the center of the

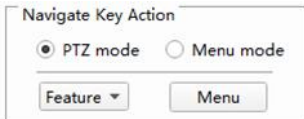
panoramic screen of the student computer on the ground and the student computer;



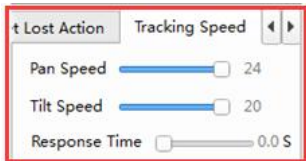
7.4.5 Advanced Parameter Configuration

Set advanced parameters, click [click to expand] to enable advanced parameter settings.

- Navigate Key Action
You can choose PTZ mode or menu mode. In the menu mode, select [Feature] or [Pano], and click the [Menu] button to set the camera's OSD menu. In PTZ mode, you can manually control the [Feature] PTZ.

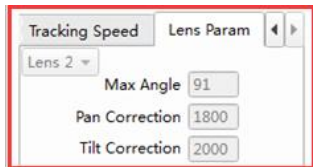


- Tracking Speed
Tracking speed: Set the horizontal speed of the close-up machine tracking; Stand-up response time: The shortest time to respond to the tracking after the student is detected to stand up, the default value: 1.0s.



- Lens Param

Lens Param: Set the lens parameters of the panoramic camera, lens 1 means 3.6mm small distortion, lens 2 means 3mm non-distortion lens, and lens 1 is standard.



- Tracking Configuration

Tracking settings: Set the working mode of the tracking machine, you can choose: boot tracking, panoramic switch, face detection; check "✓" to take effect.

Power-on Tracking: Tracking is started when the camera is turned on.

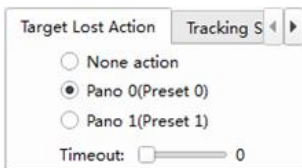
Panorama Switch: After turning on [Panorama Switch], the recording screen will first switch to the student's panorama and then to the student's close-up. After it is closed, the student's feature article will be cut directly;

Face Detection: After turning on [Face Detection], the camera will use face detection to determine whether the tracking target needs a close-up picture;

- Target Action

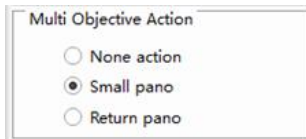
Target Lost Action: Set [Feature Camera] the action after losing the target, you can choose: None action, Pano (Preset 0), Platform (Preset 1).

Timeout: Indicates that after the target is lost, the [Target Lost Action] will be executed after the timeout period has elapsed. Value range: 0-15s, default: 0s.



Multi Objective Action: Set up tracking actions for multiple student targets after standing up, optional: None action, Small pano, Return pano.

Default: Small pano.

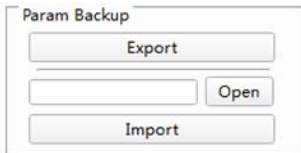


- Param Backup

Param Backup: Used to import and export the configuration parameters of the feature camera, simplifying the configuration tasks of the same scene.

Export: When you stop tracking, click [Export] to back up the tracking parameters,

click [Open], and you can see the file path;
 Import: When stopping tracking, click [Open]
 to select the tracking parameters to be
 imported, and click [Import] to wait for
 completion;



- Version Info



7.4.6 Start Track

After completing the parameter configuration, click [Apply] to ensure that the configuration parameters take effect, and then click [Start Track] to enter the automatic tracking mode.



7.5 Director Configuration

The director terminal is used to configure the communication parameters between the teacher and student camera, blackboard machine and the director host.

It is necessary to fill in the director host IP and the port number for receiving the director command, and the communication

between the teacher and student camera, blackboard machine and the director host

7.5.1 Communication Settings

Port: When UDP is selected as the communication protocol, the port number for receiving control commands from the director host, the default value: 8791.

Baud Rate: The serial port baud rate is 9600 Kbps.

Communication Protocol:

The communication mode between the camera and the recording host can be serial port or network. You need to select one of UDP, TCP and serial port.

The default protocol: UDP.

Command Type: The communication command type between the camera and the director host supports the selection of HEX or ASCII type, and all status codes can be set freely. Default command type: HEX.



7.5.2 Director Mode

Select the director mode, fill in the director switch command, the default is: internal director.

Switch Auto: After the camera receives the instruction of [switch auto], the tracking mode is switched to auto, the default value: ff 00 00 00 00 01, which can be modified.

Switch Manual: After the camera receives the instruction of [switch manual], the

tracking mode is switched to manual, the default value: ff 00 00 00 00 02, which can be modified.

7.5.3 Director Strategy

Director Strategy: External Director and Interior Director.

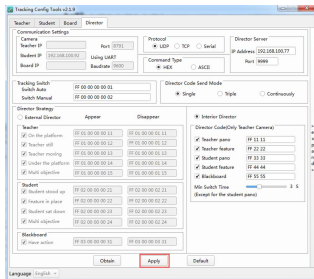
External Director: The three cameras of the blackboard machine, the student machine and the teacher machine send the current status codes to the recording and broadcasting host separately. For example, the blackboard machine has two states (with action and no action), and the student machine has four states (student stands up, close-up in place, Students sit down, multi-target), the teacher machine has five states (upper stage, static, moving, off stage, multi-target).

The recording and broadcasting host needs to direct the broadcast according to the status of the three cameras received, for example, when the teacher is on the stage Switch to the teacher's feature article screen when the teacher is off the stage, switch to the student panoramic screen when the teacher is off the stage; switch to the student feature article screen when the student feature article is in place, switch to the student panoramic screen when the student has multiple goals.

Interior Director: The teacher's camera will receive the current status of the blackboard, students, and teacher, and send the switching code to the recording and broadcasting host according to the priority from high to low. After receiving the switching code, the recording and broadcasting host can directly perform the screen guidance according to the instructions. The recording host does not need to judge the current status. That is, firstly when there is an action on the blackboard, the switching code of the blackboard is sent, and when there is no action on the blackboard, it is judged whether there is an action in the student area, and finally the teacher action is judged. For example, when the teacher is not in the podium area or walking, send the teacher panoramic switch code, when the teacher is in the podium area and is still, send the teacher close-up code, if the student stands up, first send the student panoramic switch code, when the student feature camera is in place, send the student feature article switch code, the student will return to the teacher screen after sitting down or standing up for a timeout (30s-60s).

7.5.4 Configuration Effective

After completing the director configuration, click [Apply], and the director configuration will take effect.



7.6 FAQ

Q: After setting the parameters, click "Apply", and the application failed.

A: 1: Wrong version/no tracking

- 2: The firewall is not turned off
- 3: Multiple configuration tools opened
- 4: Tracking program hung up
- 5: Computer IP conflict
- 6: The camera version is an old version

Q: Teacher/student camera does not track

A: Confirm whether the tracking has been turned on; whether the panoramic position and feature position (teacher camera) have been set; whether the teacher camera draws the tracking area; whether the three parameters of the student camera are measured accurately.



Q: High tracking false tracking rate

A: 1: Teacher Camera: draw the shielding area on the surrounding part with light source.

2: Student Camera: draw the shielding area on the surrounding part with light source; turn on face detection (if you need to turn on interlace mode, do not turn on face detection).

Q: The version information of the feature camera in the lower right corner of the tracking configuration tool is 0.0.00.

A: 1: The protocol/address of the feature camera and the pano camera are different.

2: The tracking program is abnormal and needs to be upgraded again.

3: There is some problems with the serial port connected between the pano camera and feature camera, so please return to the factory for repair.

Q: The movement of people will be blurred or smeared during the tracking of the teacher camera.

A: Enter the menu, select exposure, change the exposure mode to shutter priority, and change the shutter speed to 1/100s.

Q: The configuration tool prompts that the connection type does not match.

A: Make sure the student terminal is connected to the student camera, and the teacher terminal is connected to the teacher camera.

8 Maintenance and Troubleshooting

Camera Maintains

- If camera will not be used for a long time, please turn off the power switch,

disconnect AC power cord of AC adaptor to the outlet.

- Use soft cloth or tissue to clean the camera cover.
- Please use the soft dry cloth to clean the lens. If the camera is very dirty, clean it with diluted neuter detergent. Do not use any type of solvents, which may damage the surface.

Unqualified Application

- No shooting extreme bright object for a long period of time, such as sunlight, light sources, etc.
- No operating in unstable lighting conditions, otherwise image will be flickering.
- No operating close to powerful electromagnetic radiation, such as TV or radio transmitters, etc.

Troubleshooting

Image

- Image have jitter when the camera lens at max multiple.
- 1) Check whether the camera installed position be stabled.
 - 2) Check whether have vibrating machinery or object near the camera.
- There is no video image in Browser
IE browser does not support H5,
you need to use VLC plug-in to view videos.
Please visit VLC website
(<http://www.videolan.org/vlc>)
download and install the 32-bit VLC

media player, after it installed, visit video conference camera will have normal image display. Other mainstream browsers already support H5 and do not need to install the VLC plug-in.

- Unable to access camera through Browser
- 1) Test whether the PC to access the network can work properly, first of all, the network fault caused by the PC virus can be eliminated, until the PC and IP Camera can communicate with each other Ping.
 - 2) Disconnect the network, connect IP Camera and PC separately, and reset the IP address of PC.
 - 3) Check IP address, subnet mask, and gateway settings for IP Camera.
 - 4) Check whether the MAC address is conflicts.
 - 5) Check whether the Web port is occupied by another device.
- Forget the IP address or password for logging into the WEB interface
Default IP, username and password can be found on the label of the camera.

Control

Serial port cannot control

- 1) Check whether the camera protocol, address such is the same.
- 2) Check whether the control line is connected well.